

Panasonic
ideas for life



Network Disk Recorder
WJ-ND200

MPEG-4 JPEG

Utilizing the first Removable Hard Drive
in Network Video, the WJ-ND200 takes IP video recording
to a whole new level.



NETWORK DISK RECORDER
WJ-ND200

Preliminary

The WJ-ND200 is a secure and user-friendly network recorder specifically designed for surveillance purposes.

Handy and user-friendly, a removable hard disk drive (HDD) is employed as the recording medium. Measuring only 270 mm (approximately 11 inches) wide, it offers unsurpassed security in a space-saving design. It is capable of monitoring from 9 to 16 cameras in up to four clients, making it suitable for surveillance in small to mid size businesses, or anywhere that network recording is desired. The WJ-ND200 is an industry leading network video recorder — providing complete and intuitive functionality with a level of reliability and stability not offered by conventional PC-based recorders.



Removable HDD ensures great convenience

A new style of recorder, using two removable HDD units. Each removable HDD can be removed from the main unit by opening the front panel, creating excellent portability and archiving flexibility. The sturdy design of the HDD makes it suitable for storage. The removable HDD will also be available in larger capacities.



Insert one or two HDD units by opening the front cover. HDD loading and unloading is simple and offers easy maintenance.

Convenient for storage, supports extended archiving

The removable HDD can be removed and stored independently. You don't have to worry about erasing important video data due to overwrite recording. Furthermore, replacing a removable HDD allows for longer recording and archiving flexibility.



Easy data transport

With traditional hard disk drives, archiving requires viewing or recording interruption to locate the video needed in order to copy to a CD or DVD. Now, with the WJ-ND200 archiving video or providing evidence to a third party, such as police, is as easy as removing the HDD.*

* For viewing the images, the included viewer software is required.

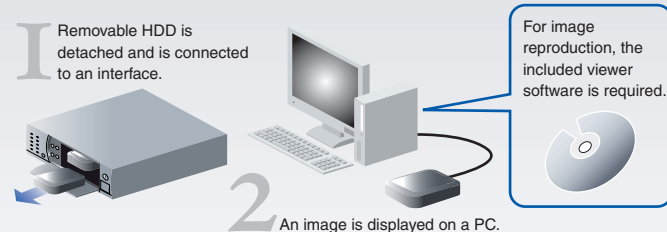
HDD replaceable at any time

With the WJ-ND200, the HDD can be replaced even when the power is on. Maintenance can be conducted at any time without interrupting recording.*

*System must have 2 HDD units.

Viewable on any PC

Images recorded with the WJ-ND200 can be checked with a PC using an optional commercial interface unit (Serial ATA/USB2.0 adaptor). The recorded images can also be viewed with another WJ-ND200.



Focus on user-friendliness and high reliability

User-friendliness

MPEG-4/JPEG Compatible

Crisp reproduction of images from the directly recorded digital image signals from cameras. Recording and reproduction uses both MPEG-4 and JPEG formats.

Setup Example

Settings		Number of Cameras	Live Monitoring	Recording	Number of Clients
Image Resolution	Image Quality				
JPEG VGA (640 x 480)	at Normal	9	10 ips*	10 ips	Two (2) browser at 2 QUADs or
MPEG-4 VGA (640 x 480)	at Normal (2,048 kbps)	9	30 ips*	30 ips	One (1) WV-AS65 at 9 screen

* With Single View

Versatile Recording Functions

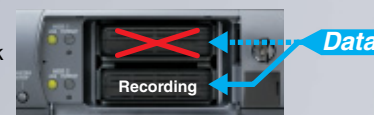
- **Multi-recording function**
Different compression formats and recording rates can be set for each camera.
- **Scheduled recording function**
Recording is automatically executed at the specified time on the specified day of the week. Furthermore, recording rates can be modified for each time period.
- **Emergency recording function**
By operating an external switch, the emergency recording mode can be activated.
- **External timer recording function**
Automatic recording is possible by using an external timer such as a timer switch.
- **Event recording function**
When an event occurs, such as a signal input from a sensor, a higher recording rate can be selected.

High Reliability

Supports Mirroring

In the unlikely event of a disk failure, video data will be stored on the other HDD.*

* System must have 2 HDD units for this mirroring to occur.



User/Host Authentication

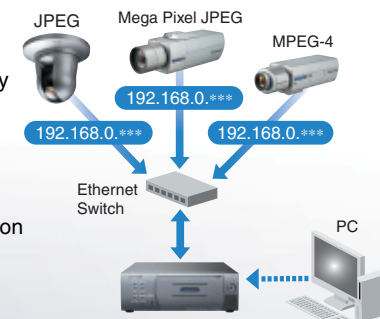
By setting user names and passwords, it is possible to limit access to the recorder. Up to 32 users can be registered. Furthermore, by activating the host authentication function, it is possible to block operations from unregistered IP addresses.

Alteration Detection Function

By attaching data for alteration detection at the time of downloading images, alteration can be detected with the included viewer software.

Camera Auto Detect

Using Panasonic i-Pro series network cameras, the WJ-ND200 automatically detects the cameras. It is possible to manually or automatically set up IP addresses while checking the camera image. Installation is simple and easy.



Setup Screen

Setup can be done with viewable image

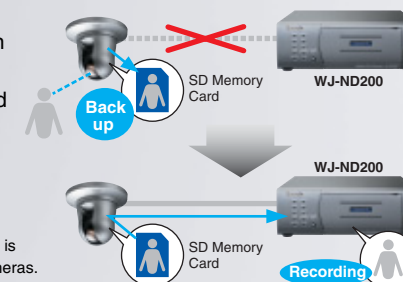
Connected camera types and IP addresses are automatically detected. (Using camera IP defaults.)

(Manual setting of camera types and IP addresses is also possible.)

System designed for dealing with network interruption

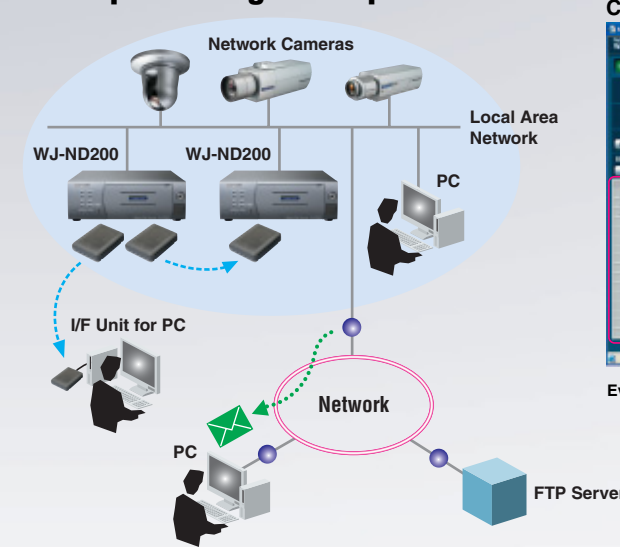
Should network interruption occur, camera images are automatically backed up on the SD memory card* incorporated within the camera. Upon restoration of the network, images stored in the SD memory card are automatically downloaded (if not in recording mode) or can be manually downloaded to the HDD of the WJ-ND200.

* SD memory card is optional and is not available on all network cameras.



Realizing a comfortable and efficient surveillance environment for small and mid size applications

Conceptual Images of Operation



Control Screen

Status Display Tab

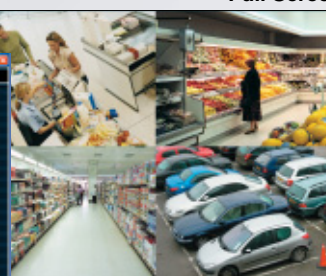
Recording Start/Stop button

Event Search Screen

HDD Control Tab

Download Button

Full Screen



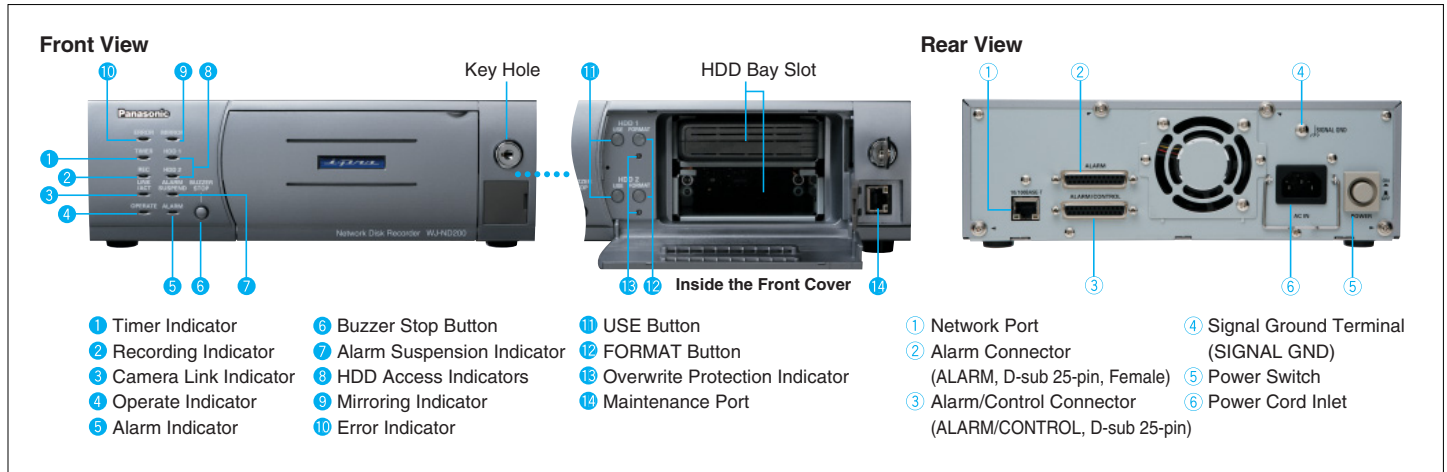
It is also possible to enlarge a monitoring image

Setup Screen

Setup and operations are executed from the Web browser of a networked PC.

The above photographs were taken for the purpose of this explanation; actual performance and images may vary depending on environmental or other conditions.

MAJOR OPERATING CONTROLS & TERMINALS



SPECIFICATIONS

General	
Power Source	120 V AC, 60 Hz
Power Consumption	Approx. 35 W
Ambient Operating Temperature	+5 °C ~ +45 °C (41 °F ~ 113 °F)
Ambient Operating Humidity	5 % ~ 90 % (non condensing)
Maximum Operating Altitude	2,000 m (6,500 feet) above sea level
Dimensions	270 mm (W) x 88 mm (H) x 360 mm (D) (10-5/8" (W) x 3-1/2" (H) x 14-1/4" (D)) (excluding rubber feet and projections)
Weight	5.0 kg (11 lbs.)
HDD	
HDD Type/Function	2.5-type removable HDD x 1 (Up to 2 HDDs) Mirroring mode available (only when 2 HDDs are installed)
Input/Output	
ALARM/CONTROL Connector	Alarm suspension input ^{*1} , Alarm reset input ^{*1} , Emergency recording input ^{*1} , Power outage detection input ^{*1} , External recording mode switching ^{*1} , Alarm output 8-16 ^{*2} , Network error output ^{*2} , Available disk space warning output ^{*2} , HDD error output ^{*2} , Camera error output ^{*2} , Error output ^{*2} , Power outage recovery completion output ^{*3} , Time adjustment input/output ^{*4} , +5 V output ^{*5} (D-sub 25-pin)
ALARM Connector	Alarm input 1-16 ^{*1} , Alarm output 1-7 ^{*2} (D-sub 25-pin)
Network Port	10BASE-T/100BASE-TX (RJ-45)
Maintenance Port	10BASE-T (RJ-45)

*1: Non-voltage make contact, 100 mA, +5 V pull-up

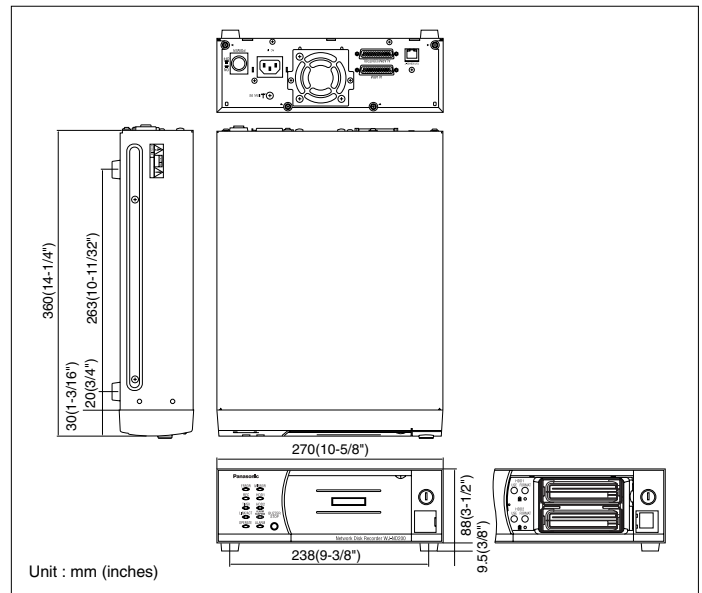
*2: Open collector output, maximum under conditions of 24 V DC and 100 mA or less

*3: HIGH (+5 V ~ +12 V, 6.3 mA max.)

*4: 52 kΩ, 5 V pull-up, -100 mA/make contact

*5: 200 mA max.

DIMENSIONS



OPTIONAL COMPONENTS & ACCESSORIES

<p>Rack Mount Bracket WV-Q200</p>	<p>Super Dynamic III Network Color Dome Camera WV-NS202</p> <ul style="list-style-type: none"> • Super Dynamic III • MPEG-4/JPEG output • SD Memory card slot 	<p>Network Color Dome Camera WV-NF284</p> <ul style="list-style-type: none"> • MPEG-4/JPEG output • SD Memory card slot 	<p>Mega Pixel Color Network Camera WV-NP1004</p> <ul style="list-style-type: none"> • MPEG-4/JPEG output • 600 TV lines • SD Memory card slot <p>Lens: optional</p>	<p>Network Security Color Camera WV-NP244</p> <ul style="list-style-type: none"> • MPEG-4/JPEG output • SD Memory card slot <p>Lens: optional</p>	<p>MPEG-4/JPEG Encoder Network Interface Unit WJ-NT304</p> <ul style="list-style-type: none"> • MPEG-4/JPEG output • SD Memory card slot 	<p>Vandal Proof Network Color Dome Camera WV-NW474S</p> <ul style="list-style-type: none"> • Super Dynamic II • Day/Night function
--	---	--	---	--	---	---

Trademarks and registered trademarks – Microsoft, and Windows are registered trademarks of Microsoft Corporation in the U.S. and other countries.
– SD logo is a trademark.

Important – Safety Precaution: carefully read the operating instructions and installation manual before using this product.

– Panasonic can not be responsible for network performance and/or other manufacturer products that reside on the network.

• All TV pictures/menu are simulated. • Weights and dimensions are approximate. • Specifications are subject to change without notice. • These products may be subject to export control regulations.

Panasonic

Panasonic System Solutions Company
Unit Company of Panasonic Corporation of North America

Security Systems

Website : www.panasonic.com/security

For Customer Support : call 1.877.733.3689

Executive Office : Three Panasonic Way 2H-2, Secaucus, New Jersey 07094

DISTRIBUTED BY:

PANASONIC CANADA INC.
5770 Ambler Drive, Mississauga, Ontario, L4W 2T3 Canada (905) 624-5010
PANASONIC PUERTO RICO INC.

DIVISION OF PANASONIC CORPORATION OF NORTH AMERICA
San Gabriel Industrial Park, 65th Infantry Ave. KM. 9.5 Carolina, P.R. 00985 (809) 750-4300

Printed in Japan
WJ-JHND200C(2P-551)